

Wellness illumination – Made in Germany

Germany's No. 1 guaranteed
LED quality until 125°C.

RADIAND
LIGHT SYSTEMS



Wellness illumination –
Made in Germany.

Others
make
steam.
We
make
light.



**Welcome to Germany's No 1 in
LED illumination for sauna and wellness.**

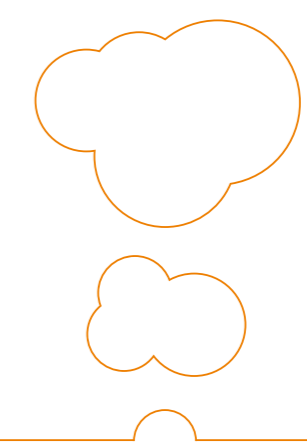
As the **leading manufacturer** of LED components for saunas we know exactly what your needs for the illumination of a wellness oasis or a sauna are. Our LED systems are the only ones on the market which can be used reliable **until 125° C degrees**. We guarantee it!

We are the first supplier of **infinite pluggable** LED components which can be installed very easy and practical because of our patented connector system. You can profit from our innovative lead and the highest product quality. Our systems illuminate **over 250,000 saunas** reliably since 2005.

We create **perfect customized LED packages** for our partner companies (wellness facilities, sauna manufacturers, architects and light planers) which can be ordered convenient and fast with just a call.

With a **location advantage** in the inventor state Baden-Württemberg and a lightning team of engineers, light planers, technicians, designers and certificated energy consultants our employees invent and produce exclusively in our both facilities in Baden Württemberg. More precisely in Stuttgart and Kernlen-Rommelshausen. **100% Made in Germany.**

125 °Celsius?
Surely!



Sauna illumination
is a challenge.
We love
challenges.



**Over 250,000 LED systems sold –
without any flaw.**

After over 15 years of sauna experience we know the requirements of our target audience exactly:

Straightforward and reliable supply with the necessary LED components for the sauna manufacturing and the arrangement of wellness oasis – this is our RADIAND brand expertise!

In a nutshell:

- Numerous LED systems for saunas since 2005
- On stock with short delivery times
- High operating temperature – reliable until 125°C
- Dimmable
- RGB, WHITE or RGB-WHITE
- High CRI value of 90 RA possible
- Made in Germany since 2005
- Easy to install because of an own patented connector system
- No need to solder or extensive wiring necessary
- IP 68 waterproof

Control system:

- Radio remote control
- Any sauna controls
- BUS system
- Trailing or leading edge dimmer
- Individual projectable and available for order



Luminous
sauna

LED
components
from one
provider.



Custom-made

Reliable contact based in Germany

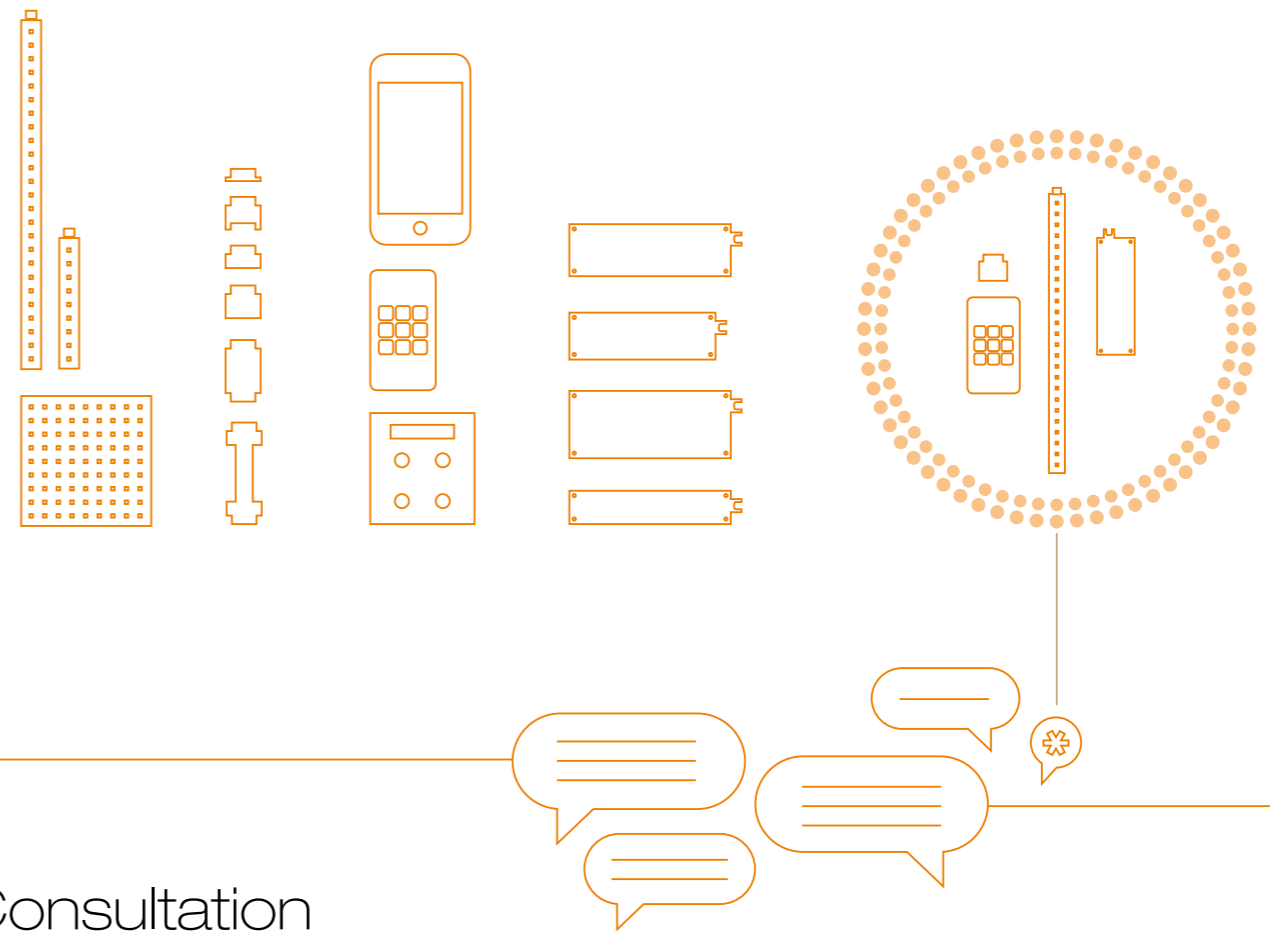
Please get to know our all-in-one offer for systems for object illumination. Not only light-emitting diodes but also self-developed controllers and power supplies complete our program: Everything from a single source.

Architects, light planners but also craftsmen appreciate this: Everything on stock with a short delivery time – sounds unbelievable but it's true. Furthermore we also project and develop special lights which are coordinated.

Your personal Package

Your needs will be defined from the beginning through our distribution team. Therefore we are able to deliver products and components fast and in an optional amount with your name or your identifier.

So you can be sure to get exactly the stuff you successfully installed in the past. This service is self-evident for us and makes your and our effort better projectable.



Consultation
appointment?
0711-263500-60
We gladly put
together your
personal LED
package.

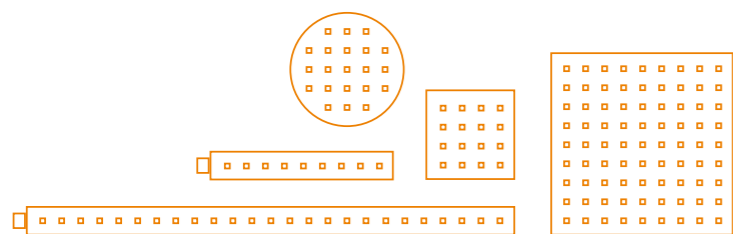
Some interesting facts about energy consumption and maintenance:

Because of a high efficiency only a little heat loss will be produced. That's the reason you only need 3 times less power. The long durability of a LED means a substantial reduction of the maintenance costs.

LED formats

All LED light sources are available in RGB, warm white and cold white. You avoid soldering because of our innovative connector system. The depicted LED light sources shine with a CRI value of at least 90 Ra or more.

LED formats	Colour temp.	LxW (mm)	Voltage	Power	Lumen	Temp.	Amount of LEDs	Connect.
LED Stripe RGB 495	RGB	495x15	24V	5W	55	125°C	20	6 pol
LED Stripe RGB 500	RGB	500x12	24V	7,5W	75	125°C	25	4 pol
LED Stripe RGB 400	RGB	400x12	24V	6W	75	125°C	20	4 pol
LED Stripe RGB 300	RGB	300x12	24V	7,5W	75	125°C	15	4 pol
LED Stripe RGB 200	RGB	200x12	24V	3W	75	125°C	10	4 pol
LED Stripe RGB 100	RGB	100x12	24V	1,5W	75	125°C	5	4 pol
LED-Stripe RGB-WHITE	2800k	495x15	24V	4W/3W	75	125°C	20	6 pol
LED Stripe WHITE 500	2800k	500x12	24V	7,5W	74	125°C	25	2 pol
LED Stripe WHITE 400	2800k	500x12	24V	6W	74	125°C	20	2 pol
LED Stripe WHITE 300	2800k	300x12	24V	4,5W	74	125°C	15	2 pol
LED Stripe WHITE 200	2800k	200x12	24V	3W	74	125°C	10	2 pol
LED Stripe WHITE 100	2800k	100x12	24V	1,5W	74	125°C	5	2 pol
LED Feld RGB 210	RGB	210x210	24V	36W	56	80°C	144	6 pol
LED Feld WHITE 100	2800k	100x100	24V	5,5W	74	125°C	20	2 pol
LED-Flexband RGB 5m roll per meter	RGB	5000x10	24V	15W	60/m	80°C	60/m	4 pol
LED-Flexband WHITE 5m roll per meter	2800k	5000x10	24V	10W	65/m	80°C	60/m	2 pol



Einsatz auch
unter Wasser

The controller

High quality, reliable controller for programmable colour scenes and colour change. The easy menu navigation helps our customers to get along.



Dimmer LLC Mini Smartphone Booster

Brightness adjustable	•	•	•	
Brightness storable	•	•	•	
Automatic colour change		•	•	
Speed of colour change		•	•	
Manual colour change		•	•	
Colour storable		•	•	
White tone control		•	•	
Auto start function (net on)	•	•	•	•
Input voltage 12V/24V	•	•	•	•
Output power at 24V	150W	150W	150W	150W
Output power at 12V	75W	75W	75W	75W
Polarity protected	•	•	•	•
Output short circuit proof	•	•	•	•
Transfer	15	15	15	



Nice
lightning
125°C?

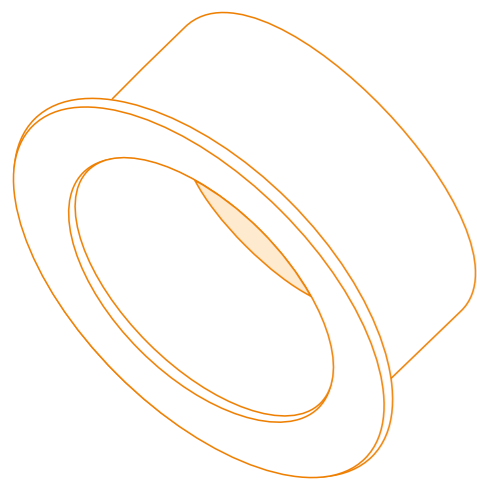
Only
from the
market leader.

www.radiand.de

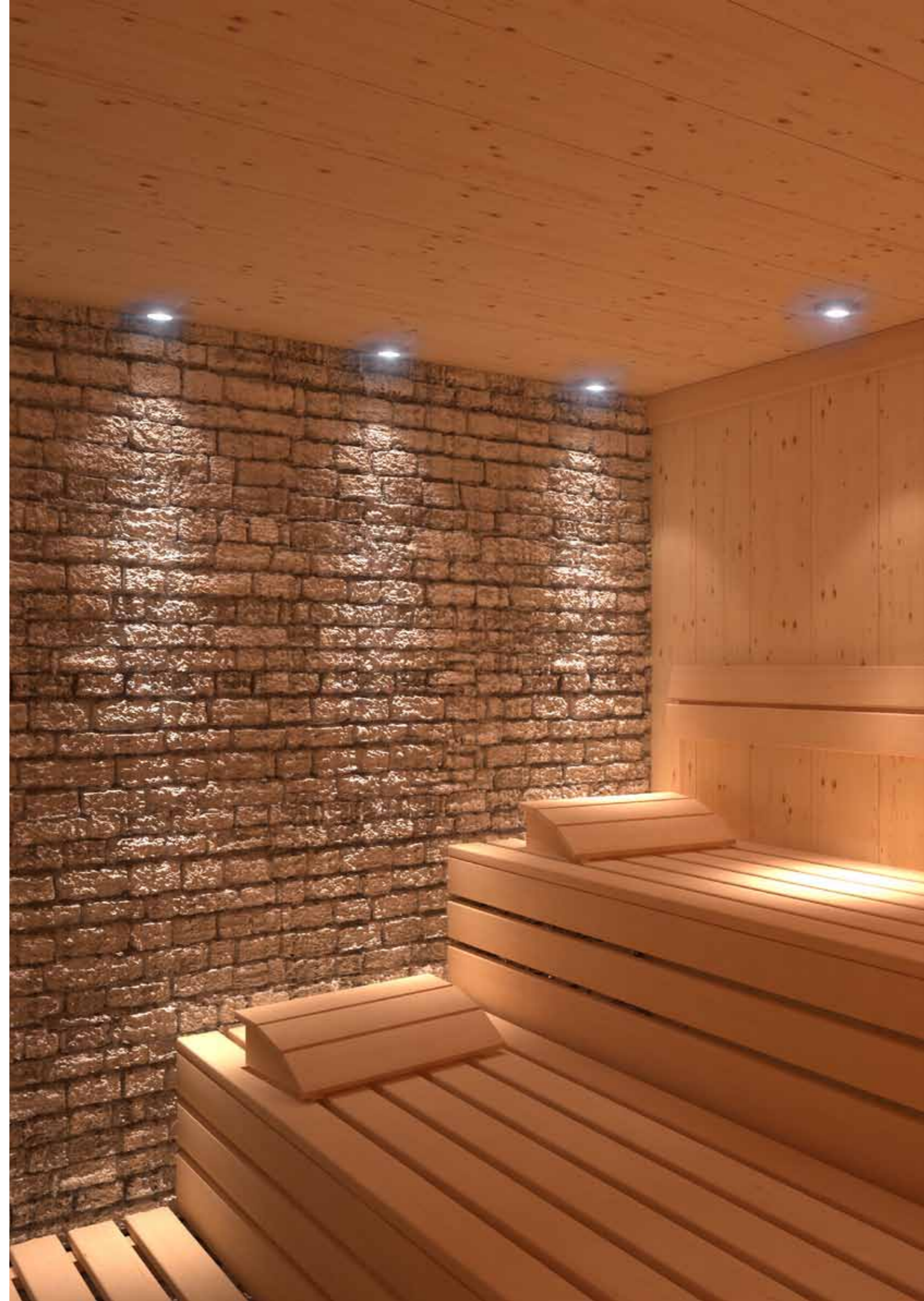
NEW! The LED spots

Ceiling spotlights are a sensitive issue especially in the sauna illumination. RADIAND has the perfect solution: The new LED spots have a stainless steel housing, satined real glass and are easy to install with retaining clips. As they are high quality casted (IP65) they work despite of humidity and steam influence in saunas guaranteed until 125°C.

	Colour temp.	LxW (mm)	Voltage	Power	Lumen	Temp.	Amount of LEDs	Connect.
LED spot RGB (with housing)	RGB	95x45	24V	5,5W	75	125°C	25	4 pol
LED spot RGB (with housing)	RGB	73x45	24V	3W	75	125°C	7	4 pol
LED spot WHITE (with housing)	2800k	90x45	24V	7W	75	125°C	20	2 pol
LED spot RGB (with housing)	2800k	73x45	24V	4W	75	125°C	7	2 pol
LED spot RGB-W (with housing)	2800k	90x45	24V	4/3W	75	125°C	20	6 pol



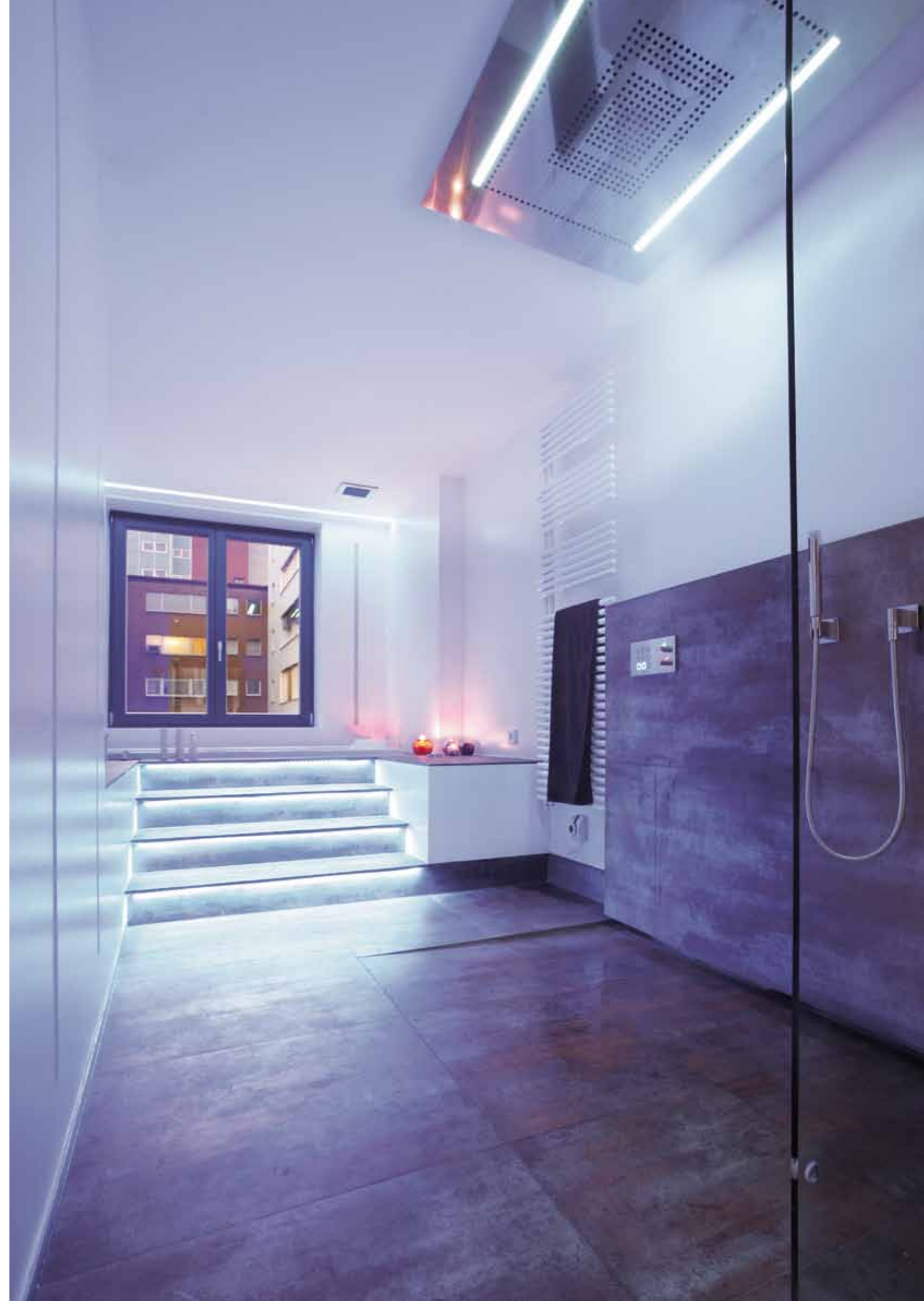
IP 65 –
waterproof casted.



The power supplies

Our diverse selection of power supplies completes the LED system offer. And as you know there is no light without the necessary power.

Power supplies	Voltage	Power	Dimensions (mm)	Special features
LPV-20-24	24V	20W	118x35x26	
LPV-60-24	24V	60W	163x43x32	
LPV-100-24	24V	100W	190x52x37	
ELG-150-24	24V	150W	219x63x36	UL-admission
Control				
ELG-150-24-3	24V	150W	219x63x36	0-10V, 1-10V, DALI
PWM-60-24	24V	60W	150x53x35	PWM-interface
PWM-120-24	24V	120W	191x63x38	PWM-interface
Phasenabschnitt 30W	24V	30W	260x32x20	Phase section
Phasenabschnitt 80W	24V	80W	230x70x43	Phase section
Phasenabschnitt 150W	24V	150W	256x78x47	Phase section



IP 68 casting technology

We offer high quality casted aluminium profiles for outdoor usage. If you wish they can be used permanently under water too.

U-Profil IP 68 – straight or curved

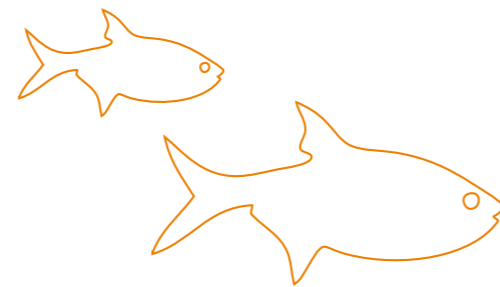
- PUR casted under vacuum
 - Chlorine resistant
 - LED illumination in an U-profile
 - Aluminium or plastic
 - Max. length per profile 5 m
- IP 68: complete protected for on going under water usage
 - Perfect for swimming pools and steam baths
 - Available in custom lengths

Guaranteed waterproof

- We can offer you the right satined solution. According to your wishes individual manufactured waterproofed profiles are available.
- LED illuminated systems speak for itself. Upgrade the effect of a fountain or pool facility with LED technic – Made in Germany. Ask us for reference projects.



High quality casting solutions. Waterproof LED-systems

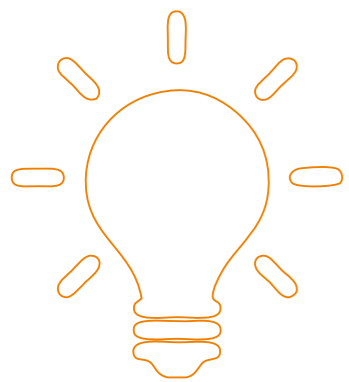


RADIAND light planning

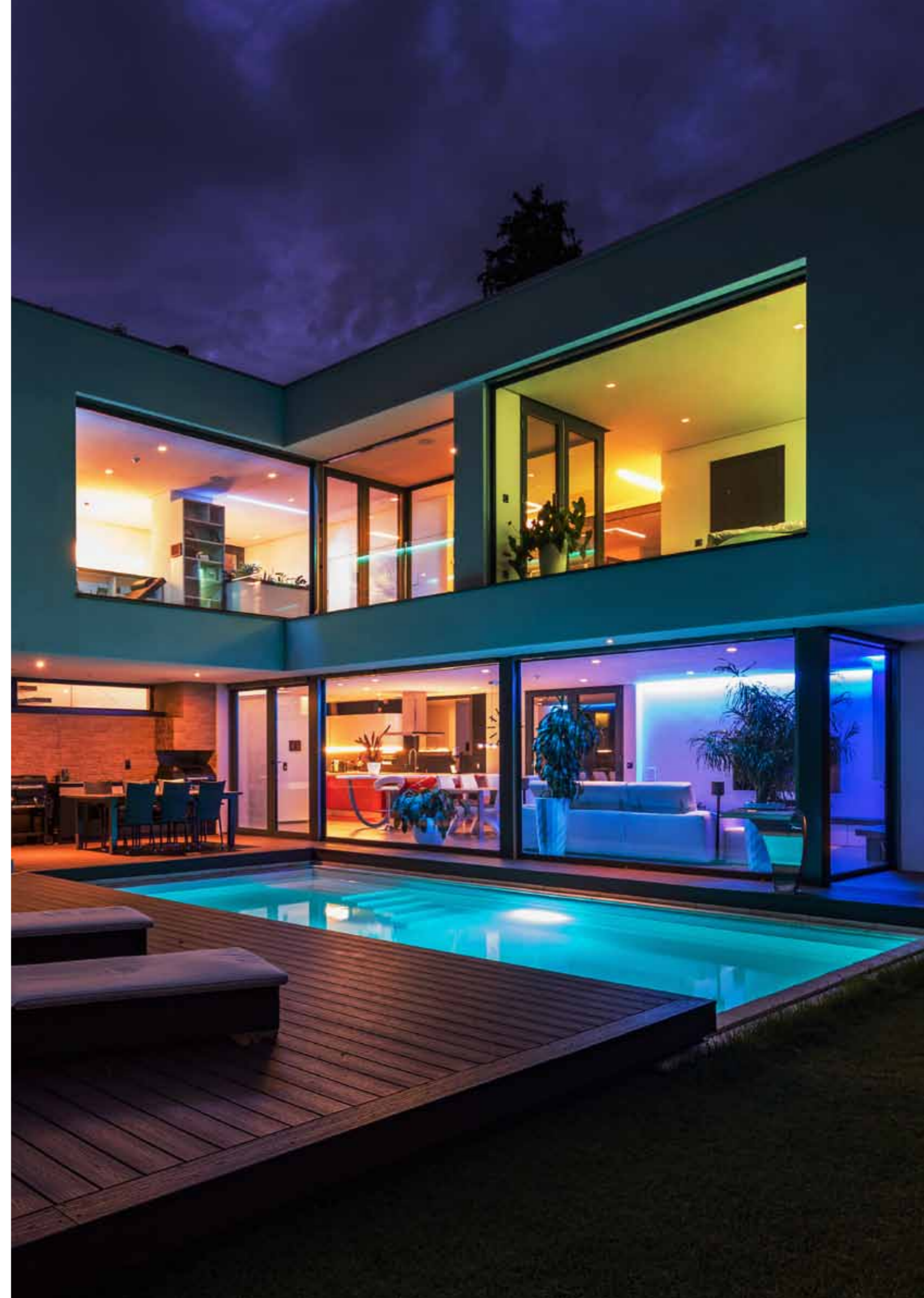
Beforehand
planning means
not to repair
behind.



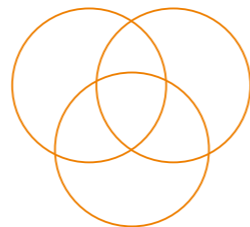
Extensive knowledge and experience about electronics, LED-technic and the right control makes it possible for us to support our customers expedient.



Consultation
for light planning:
Call +49-711-26350060



LED Light Emitting Diode



1. Colour measurement

To measure colour there is a colour system which looks like a shoe sole. There are two colour coordinates, illustrated with x, y coordinates. Each colour location is clearly assigned to a colour.

Question:

Which colour location can be identified as the same colour?

Answer:

All colour locations which are located in the shown ellipse are seen in the same colour. The human eye is not able to differentiate the colour places in the ellipse. The ellipses are not the same size as you can see easily.

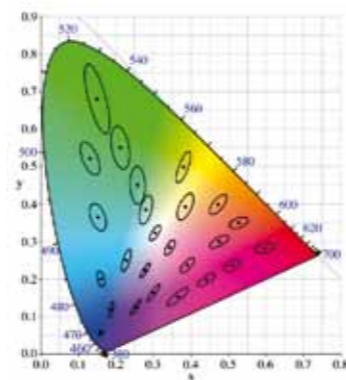


Illustration: colour space curve, CIE-MAC-Adams ellipses

2. Colour composition

RGB:

Each RGB-LED has three single LEDs which light in the colours red, green and blue. The performance of each LED is different.

Illustration: spectral distribution as a function of wavelength

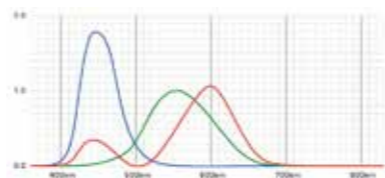


Illustration: spectral distribution as a function of wavelength

Colour space:

Depending on the location of the single LED the reachable colour location will be different. The example shows the red point R, the green point G and the blue point B. Thereof it shows the possible colour space in the triangle. The white point W results from this.

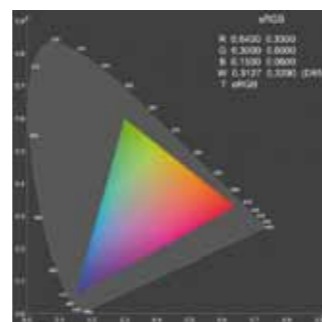


Illustration: colour space curve, sRGB-Gamut



Illustration: white tone spectrum. White is not equal white

3. The colour reproduction:

CRI value:

The value of the colour reproduction is specified as a unit Ra. If the value is close to 100 Ra the colour fastness is very high. Cheap LEDs indicate a Ra value of 70. Our high quality LEDs indicate a Ra value up to 96 Ra. A low Ra value means that the colour looks falsified or unnatural.



*The graphic presentation shows a MacAdams ellipse which is 10 times enlarged to illustrate the effect



RADIAND

LED LICHTSYSTEME

RADIAND AG | Schwabenbergstr. 100 | 70188 Stuttgart
Tel.: +49 711 263500-60 | Fax: +49 711 263500-69 | E-Mail: leuchten@radiand.de
www.radiand.de